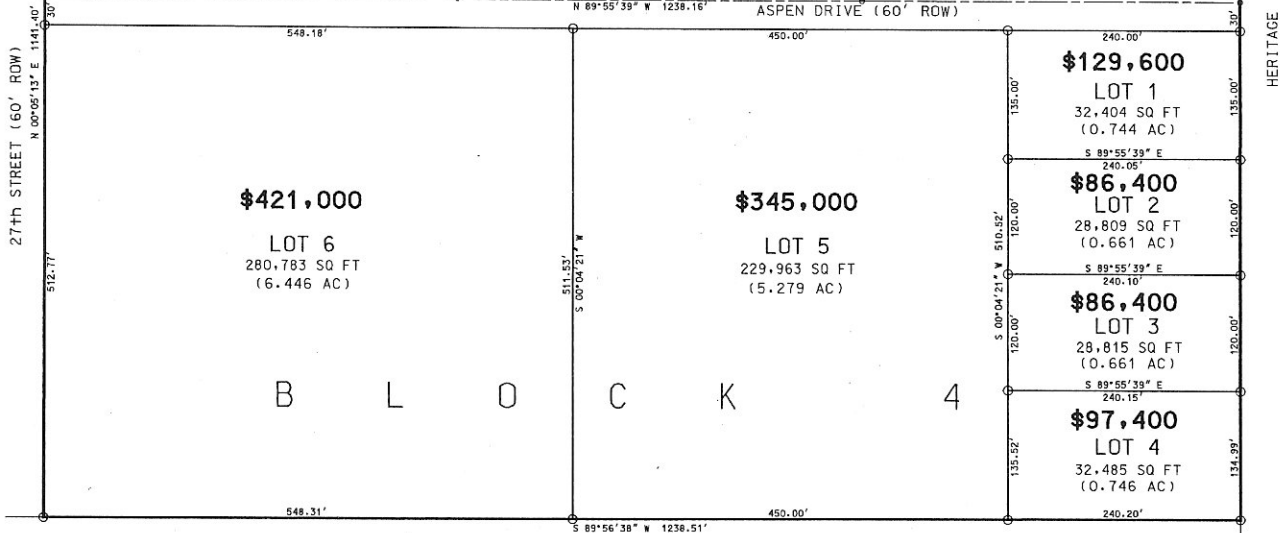
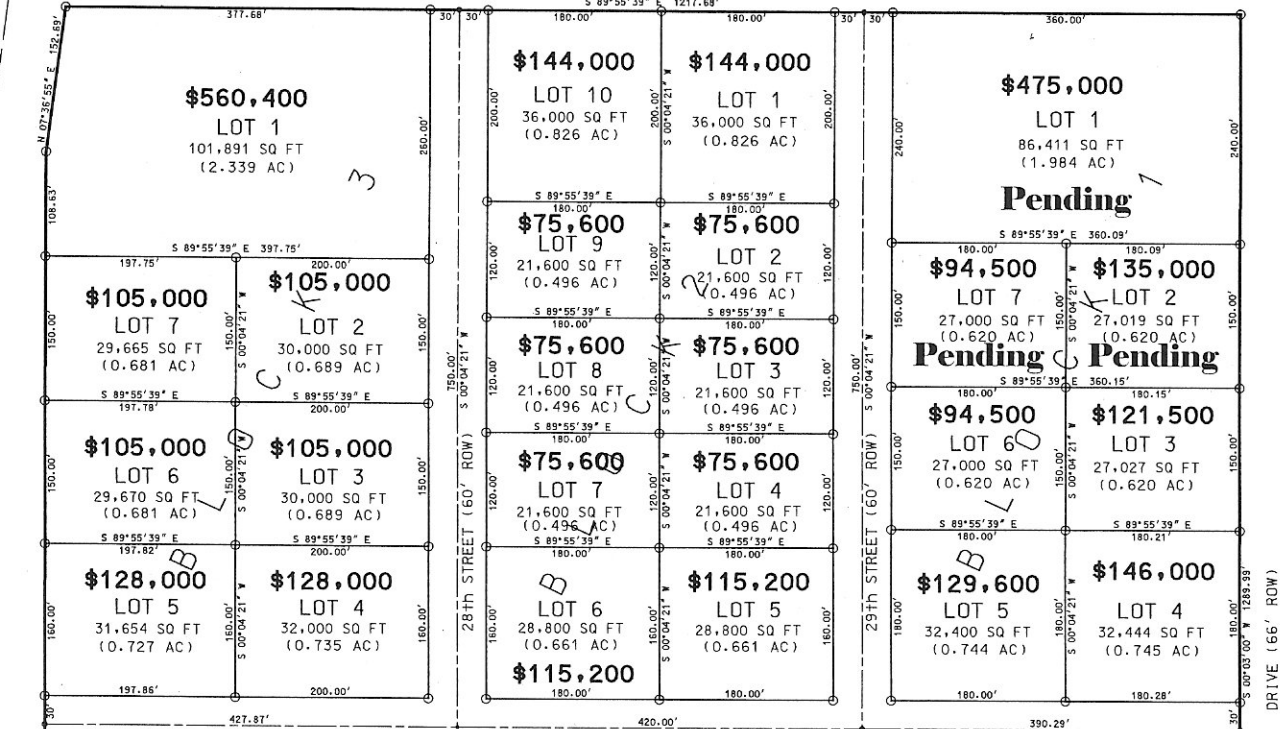


**PRELIMINARY PLAT OF  
 LOTS 1-7 OF BLOCK 1, LOTS 1-10 OF BLOCK 2, LOTS 1-7 OF BLOCK 3  
 AND LOTS 1-6 OF BLOCK 4, ALL OF HERITAGE ADDITION,  
 CITY OF SPEARFISH, LAWRENCE COUNTY, SOUTH DAKOTA**

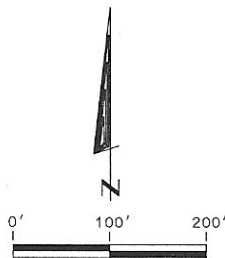
FORMERLY PART OF THE NE1/4 NE1/4 OF SECTION 24, T6N, R2E, BHM  
 CITY OF SPEARFISH, LAWRENCE COUNTY SOUTH DAKOTA

4th AVENUE (60' ROW)



TRACT A OF SE1/4 NE1/4 SECTION 24, HERITAGE ADDITION  
 (HIGH PLAINS HERITAGE SOCIETY, INC)

*Blocks 2 + 3 + 28th St. Row*  
*13.48 ACRES*  
*587,280 Sq Ft.*  
*PRICE: \$ 2,208,400.00*



PREPARED BY:

NJS ENGINEERING  
 P.O. BOX 226  
 SPEARFISH, SD 57783  
 (605) 642-4772  
 PROJECT #4270